



28VDC Mini Power Distribution Unit

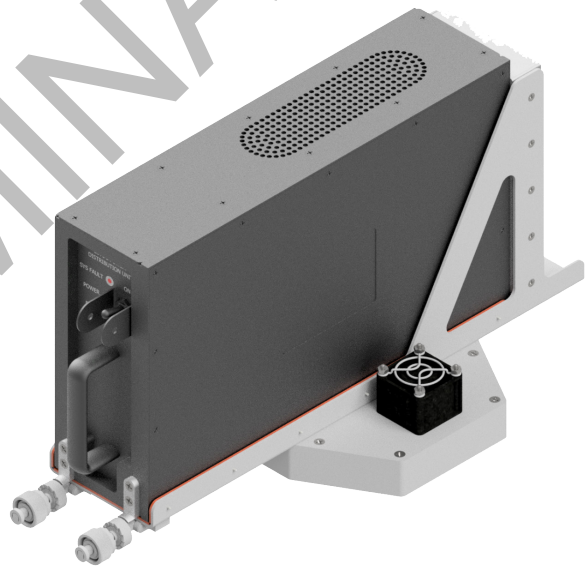
The +28VDC Mini Power Distribution Unit (PDU) provides an ATR-style variant to our highly reliable 19" rack-mount PDU design. The environmentally-sealed Mini PDU is compact and designed for austere operations.

The Mini PDU's technology replaces the need for circuit breakers and provides the ability to use software settings to customize and provision power in mission critical systems.

The unit manages and monitors up to eight independent solid-state power channels and distributes them through its blind-mate connections. Each channel provides a number of protective features, including short circuit protection, and enables immediate circuit deactivation.

For overload protection, the unit implements a detection method that sets a variable trip level to prevent nuisance trips and to protect wires and loads.

The unit includes a remote-control interface that enables values of the output channel's state, voltage, and current to be polled over the Mini PDU's embedded Ethernet interface.



Features

- Ethernet Management
- Eight Independent Load Channels
- Instant Trip & I²t Protection
- Controlled Rise/Fall Times
- Factory Set Default Channel Configurations
- Remote Power Off Control



Specifications

- Power Input Voltage: +28VDC, 160A (Max)
<2A Current Draw (Idle)
- Power Output Amperage By Channel
Eight Channels @ 2.5A - 25A
- Custom Configurations Available
- Environmentally Sealed

Indicators

- Power Status
- Fault
- System Status

Dimensions (Approximate)

12.52" (L) x 7.64" (W) x 3.56" (H)

Weight (Approximate)

Mini PDU 9.5 lbs.

Docking Tray 2 lbs.

Designed to Meet the Following Standards

- Electrical Power – MIL-STD-704F
- Temperature – RTCA DO-160G, Section 4, Categories A1 & B1
- Altitude – RTCA DO-160G, Section 4, Category B1
- Rapid Decompression – RTCA DO-160G, Section 4, Category B1
- Temperature Variation – RTCA DO-160G, Section 5, Category B
- Humidity – RTCA DO-160G, Section 6.3.2, Category B
- Structural Loads/Acceleration – RTCA DO-160G, Section 7, Category B
- Vibration – RTCA DO-160G, Section 8, Category S
- Explosive Conditions – RTCA DO-160G, Section 9
- Salt Atmosphere – RTCA DO-160G, Section 14, Category S
- Lightning (Indirect Effects) – RTCA DO-160G, Section 22
- Electromagnetic Effects – MIL-STD-461F

